

# Isle De Paradisio

Isle De Paradisio

Courtesy of Springs Creative

Designed by Bart Raymond

Finished Size: 45" x 45" (approximate)

## SUPPLIES & TOOLS:

- 2 7/8 yards Floral Master - Backing
- 3/8 yard Floral Master
- 1/3 yard Floral Bouquet
- 1/4 yard Chrysanthemum
- 1/4 yard Stained Glass Birds
- 1/4 yard Packed Floral
- 1/4 yard Tonal Tile Pink
- 1/4 yard Tonal Tile Green
- 1/2 yard Tonal Tile Blue
- 1/4 yard Maiden Hair
- 1/3 yard Quilter's Solid-Goldenrod
- 5/8 yard Moroccan
- Twin size batting
- Basic sewing supplies
- Sewing machine

## DIRECTIONS:

- Please read all directions before beginning and press after each step.
- All seam allowances are 1/4".
- WOF = Width of Fabric
- Press seams as you go

## Cutting (label pieces as you cut):

From Floral Master cut:

- Two strips 6 1/2" x WOF. From this strip cut five 6 1/2" x 12 1/2" rectangles - Unit 1.

From Floral Bouquet cut:

- One strip 6 1/2" x WOF. From this strip cut five - 6 1/2" squares - Unit 2.
- One strip 2" x WOF. From this strip cut four - 2" x 4 1/4" rectangles - Unit 3 and four - 2" squares - Unit 4.

From Chrysanthemum cut:

- One strip 6 1/2" x WOF. From this strip cut five - 6 1/2" squares - Unit 5.

From Stained Glass Birds cut:

- One strip 4 1/4" x WOF. From this strip cut eight - 4 1/4" squares - Unit 6.

From Packed Floral cut:

- One strip 4 1/4" x WOF. From this strip cut eight - 4 1/4" squares - Unit 7.

○ From Tonal Tile Pink cut:

- Two strips 2" x WOF. From these strips cut: eight - 2" x 4 1/4" rectangles - Unit 8 and four - 2" squares - Unit 9.

○ From Tonal Tile Green cut:

- Two strips 2" x WOF.
- From these strips cut: Eight - 2" x 4 1/4" rectangles - Unit 10.
- Four - 2" squares - Unit 11.

○ From Bell Flower cut:

- Two strips 2" x WOF. From these strips cut: Eight - 2" x 4 1/4" rectangles - Unit 12.
- Four - 2" squares - Unit 13.

○ From Tonal Tile Blue cut:

- Two strips 2" x WOF. From these strips cut: Eight - 2" x 4 1/4" rectangles - Unit 14.
- Eight - 2" squares - Unit 15.
- Five strips 2 1/2" WOF - Binding

○ From Maiden Hair cut:

- Two strips 2" x WOF. From these strips cut: Eight - 2" x 4 1/4" rectangles - Unit 16.
- Four - 2" squares - Unit 17.

○ From Quilter's Cotton Goldenrod cut:

- Four strips 1 1/2" x WOF - Inner Border - Unit 18
- One strip 2" x WOF. From this strips cut: Four - 2" x 4 1/4" rectangles - Unit 19.
- Eight - 2" squares - Unit 20.

○ From Moroccan Tile cut:

- Five strips 3 1/2" x WOF - Outer border - Unit 21.

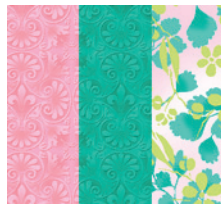


1. Sew one Unit 2 Floral Bouquet 6 1/2" square to one Unit 5 Chrysanthemum 6 1/2" square. Sew this unit to one Unit 1 Foral Master 6 1/2" x 12 1/2" rectangle. Make five. Block should measure 12 1/2".



2. Refer to the diagrams below to sew the Unit 3, 8, 10, 12, 14, 16 and 19 – 2" x 4 1/4" rectangles together.

Diag 1



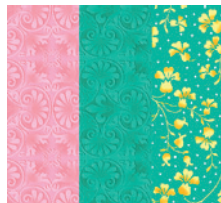
Make 4

Diag 2



Make 4

Diag 3



Make 4

Diag 4



Make 4

3. Refer to the diagram below to sew the Unit 4, 9, 11, 13, 15, 17 and 20 – 2 squares together. Then sew the rows together.

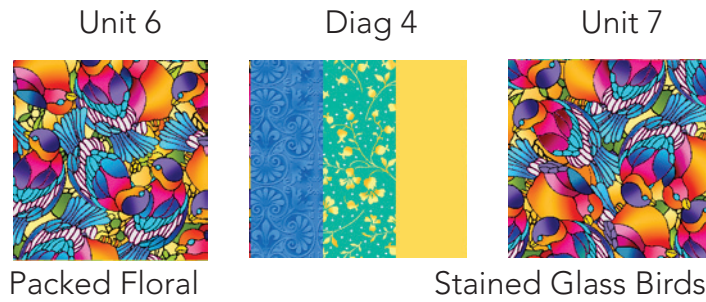


Make 4

- 4.a Refer to the diagram below: Sew one Diag.  
 1 piece between one Unit 7 Packed Floral  
 4 1/4" square and one Unit 6 Stained Glass Birds  
 4 1/4" square. Make four.



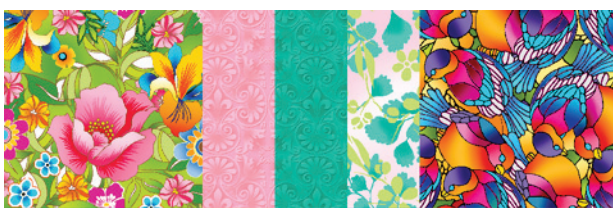
- 4.b. Sew one Diag 4 piece between one Unit 6 Stained Glass Birds 4 1/4" square and one Unit 7 Packed Floral 4 1/4" square. Make four.



5. Refer to the diagram below to sew one unit from assembly 3 between one diagram 2 block and one assembly 3 block from assembly 2. Make four.



6. Refer to the diagram below to sew one block from assembly 5 between two assembly 4 (a & b) blocks. Make one of each combination as shown. Make four. Blocks should measure 12 1/2".



7. Refer to the quilt picture to lay the blocks out in rows. Sew the blocks together to make three rows. Sew the rows together to make the center of the quilt.

8. Border #1 - Sew the Unit 18 – 1 ½" Quilter's Cotton Goldenrod inner border strips together in a long strip. Measure the sides of the quilt top, average the two measurements and use the average number to cut two border strips. Sew these border strips to the sides of the quilt top. Measure the top and bottom of the quilt top, average the two measurements and use the average number to cut two border strips. Sew these border strips to the top and bottom of the quilt top.

9. Border #2 – Same as step 8 using the Unit 21 - 3 ½" Moroccan Tile strips.

10. Layer, quilt, and bind as desired.

Skill Level: Level 2